

“Extraordinary Outcomes of Voluntary Conservation”

**North Dakota Grazing Lands Coalition
Bismarck, ND
January 16, 2019**

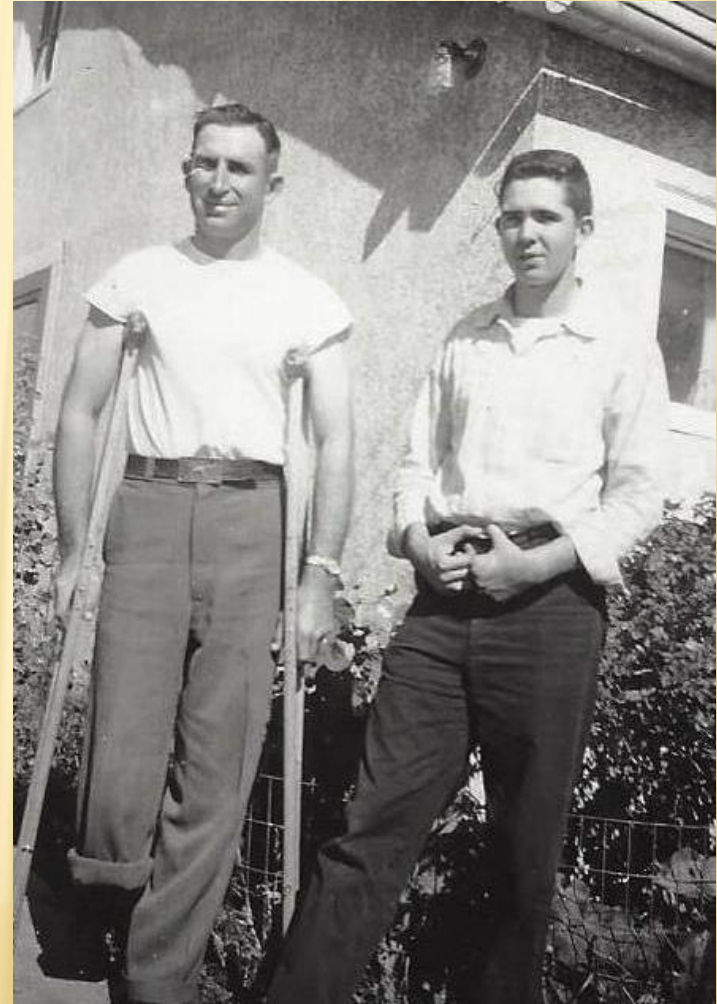
***Jeremy Wilson &
Sarah Bedgar Wilson, M.S.
Co-Owners, Wilson Farm
Jamestown, ND***



Susan & J. Harry Wilson



Ruth & W.C. "Bill" Wilson





What's "Extraordinary"?

- The story God is writing
- Our predecessors, some of which we've never met.
 - Farmers, Scientists, Conservationists
- Our mentors
- Our communities and our "tribes"
- We are but humble servants, temporary vessels designed to fulfill His plan.
- The best is yet to come.

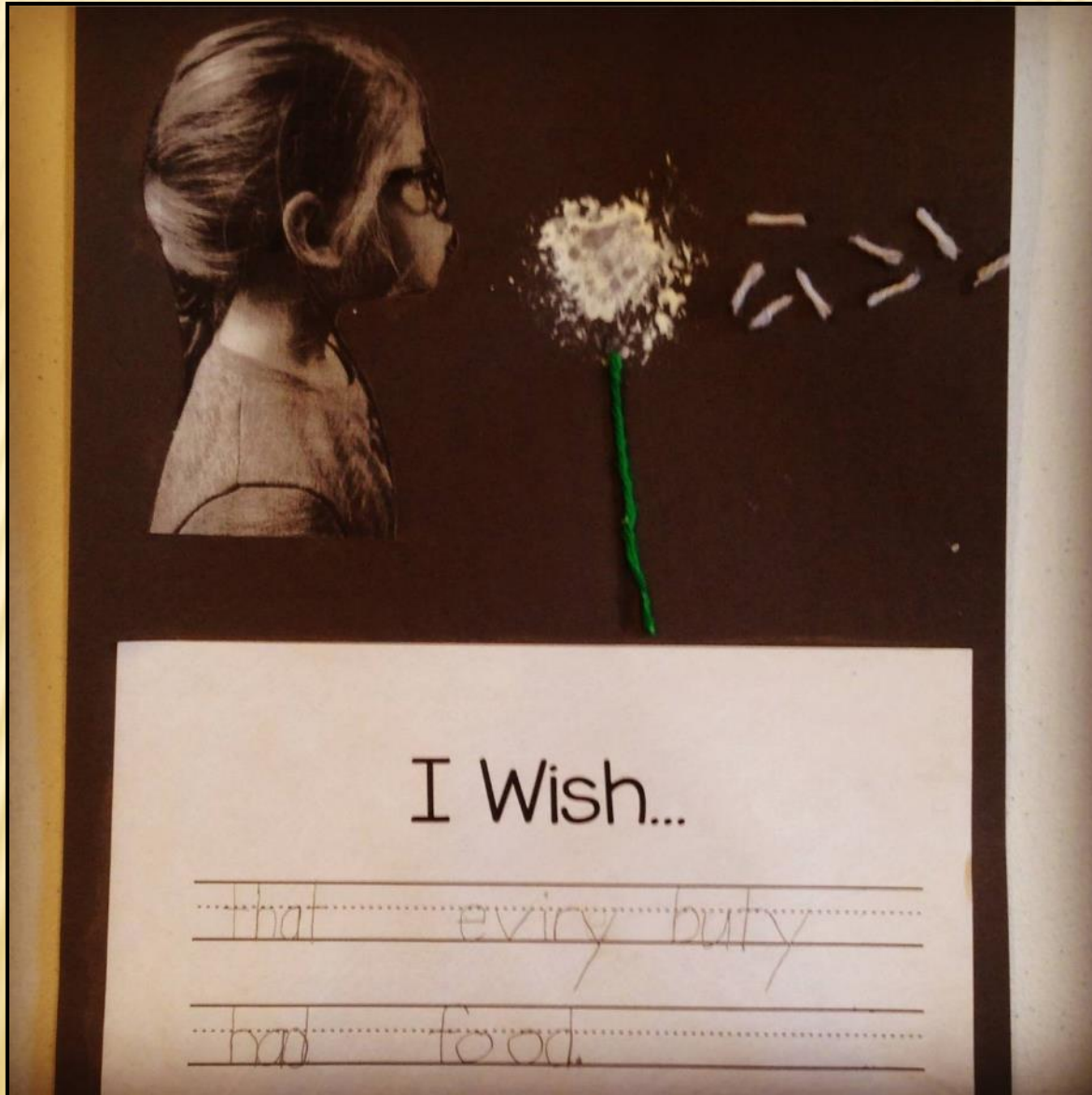
Wilson Farm

- Personal Philosophy:
 - Faith, Family, Farming
 - In that order!



- “...Whatever you do, do it with all your heart, as if working for the Lord, and not for men” – Colossians 3:23

Wilson Farm



Wilson Farm

- Regenerative
 - Land
 - Livestock
 - People
- Three-legged stool
 - Stewardship
 - Innovation
 - Outreach



Voluntary Conservation Techniques

Principles of Soil Health

– Burleigh County NRCS –Jay Furher

- 1. Keep the soil covered at all times**
- 2. Do Not Disturb**
- 3. Ensure diversity**
- 4. Continuous Living Roots at all times**
- 5. Integrate Livestock**

Voluntary Conservation Techniques

Principles of Soil Health

– Burleigh County NRCS –Jay Furher

1. Keep the soil covered at all times

2. Do Not Disturb

3. Ensure diversity

4. Continuous Living Roots at all times

5. Integrate Livestock



Voluntary Conservation Techniques

Principles of Soil Health

– Burleigh County NRCS –Jay Furher

1. Keep the soil covered at all times

2. Do Not Disturb

Minimize / Eliminate

- All Tillage
- Excessive Pesticides / Fertilizers
- Crop or Residue removal

3. Ensure diversity

4. Continuous Living Roots at all times

5. Integrate Livestock

Corn seeded into Rye cover crop







	1958	2014
Depth of Topsoil (Ap horizon)	6.3"	5.1"
Distance to Subsoil (C horizon)	34.3"	15"

Soil Loss of approximately 19" over 40 years

0.475" / year

source: Dave Franzen's presentation named *History of Soil Erosion in North Dakota*,
<https://youtu.be/vQF0hy2crH0>



Voluntary Conservation Techniques

Principles of Soil Health

– Burleigh County NRCS –Jay Furher

1. Keep the soil covered at all times

Minimize / Eliminate

2. Do Not Disturb

- All Tillage
- Excessive Pesticides / Fertilizers
- Crop or Residue removal

3. Ensure diversity

4. Continuous Living Roots at all times

5. Integrate Livestock













Voluntary Conservation Techniques

Principles of Soil Health

– Burleigh County NRCS –Jay Furher

1. Keep the soil covered at all times

Minimize / Eliminate

2. Do Not Disturb

- All Tillage
- Excessive Pesticides / Fertilizers
- Crop or Residue removal

3. Ensure diversity

4. Continuous Living Roots at all times

5. Integrate Livestock





Jeremy Wilson Farm-collected June 15 & 19, 2018-Hal Weiser

SW 1/4 Section 17 T138N R64W

Infiltration-Single Ring Falling Head

	Field Vol. Water %	1rst inch		2nd inch		3rd inch	
		min:sec	in/hr	min:sec	in/hr	min:sec	in/hr
Intertrack	17.5	0:32	113	7:00	9	19:40	3.1
Intertrack	20	0:06	600	2:00	30	6:30	9.2
Intertrack	20	0:03	1200	1:40	36	3:40	16.3
		0:14	637		25		9.5 Ave.

1:1 pH

Depth	Svea loam		Barnes loam	
	Low Zone	Mid Zone	High Zone	Mid Zone
0-2 inch	5.5	6.0	6.4	6.8
2-4 inch	5.4	5.5	6.6	6.4
4-6 inch	5.3	5.2	6.9	7.0
6-8 inch	5.8	5.4	7	7.4
8-10 inch	6.5	6.0	7.2	7.6
10-12 inch	7	7.0	7.5	7.7

NE 1/4 Section 18 T138N R64W

Infiltration-Single Ring Falling Head

	Field Vol. Water %	1rst inch		2nd inch		3rd inch	
		min:sec	in/hr	min:sec	in/hr	min:sec	in/hr
Intertrack	27	1:45	34	20:00	3	36:00	1.7
Intertrack	26	0:30	120	3:30	17.1	9:15	6.5
Intertrack	27	0:45	80	12:00	5	17:00	3.5
Wheel Track	30	11:00	5.5	48:00	1.25		
		3:30	60	20:52	6.6	20:40	3.9 Ave.



Voluntary Conservation Techniques

Principles of Soil Health

– Burleigh County NRCS –Jay Furher

1. Keep the soil covered at all times

Minimize / Eliminate

2. Do Not Disturb

- All Tillage
- Excessive Pesticides / Fertilizers
- Crop or Residue removal

3. Ensure diversity

4. Continuous Living Roots at all times

5. Integrate Livestock

Pollinators





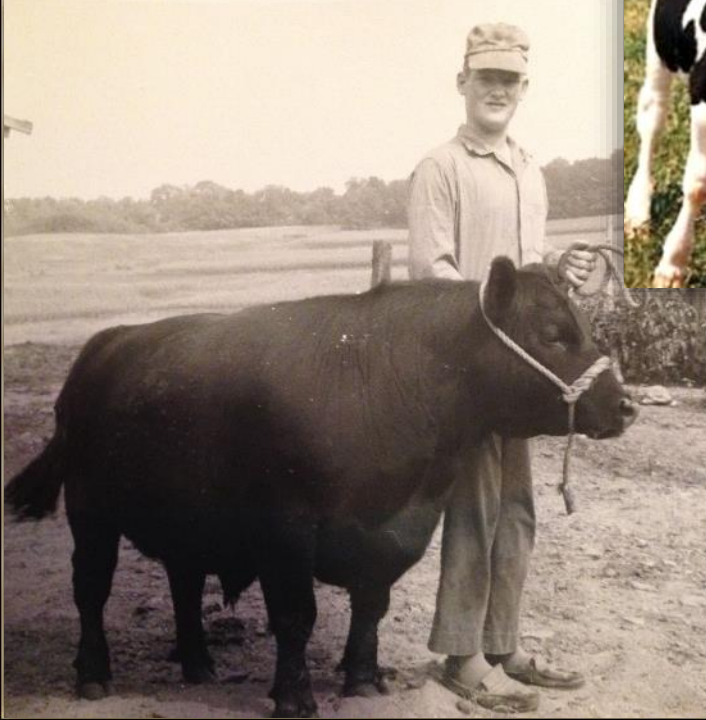








#ReturnoftheRuminants





Wilson
Livestock
Est. 2017



Wilson Livestock





#ReturnoftheRuminants





Outreach

EXTENDING KNOWLEDGE >> CHANGING LIVES



Wilson Farm Cover Crop Field Tour

Increasing Plant Diversity for Soil Health

Topics and Speakers:

Jeremy Wilson – Farmer

- Observe interseeded cover crops in corn
- Planting clover with wheat

Hal Weiser – NRCS Soil Health Specialist

- Water infiltration rate demonstration

Keith Berns – Green Cover Seed

- Cover crop species and timing and placement

Alicia Harstad – Stutsman County Extension Agent

- Weed control with rye in soybeans

For more information, contact the Stutsman County Extension office at 701-252-9030 or Jeremy Wilson at 701-320-6686.

www.ag.ndsu.edu/stutsmancountyextension

Wednesday,

July 18th

9:00 am to 2:00 pm

Lunch Provided

Tour will start at the Wilson Farm (3825 81st Ave SE, Jamestown).

Directions from I94:

- Take I94 exit 256 (HWY 281 bypass exit) and go south on 81st Ave SE for 2 ¼ miles – the farm is on the west side of the road.



Cover Crops, North Dakota State University and U.S. Department of Agriculture cooperating. NDSU does not discriminate in its programs and activities on the basis of age, color, gender, expression, genetic information, race, religion, national origin, participation in lawful off-campus activities, physical or mental disability, pregnancy, public assistance status, sex, sexual orientation, veteran status, or other characteristics. For more information, contact the Director of the Office of Institutional Diversity, 1000 University Drive, ND State, Jamestown, ND 58501. 701-231-7289. Title IX: 701-231-7289. The publisher will not be held liable for errors or for any consequences arising from the use of the information contained herein. © 2013 North Dakota State University. All rights reserved.

INDUSTRY COLLABORATION



Outreach



Outreach



A Surprising Outreach Opportunity: #GoatYogaND



Outreach



Resources

- American Farm Bureau Foundation for Agriculture:
 - www.agfoundation.org
 - “Accurate Ag Books”
- CommonGround
 - www.findourcommonground.org

Let's have a
conversation
about how
YOUR FOOD
is grown.



**WE HAVE SO MUCH
TO CELEBRATE!**



STEWARDS OF MIRACLES



STEWARDS OF MIRACLES



LEAVE A LEGACY





**WORK
IN
PROGRESS**



*“A [farmer] shouldn’t just be a [farmer],
[he/she] ought to be God’s representative in the
[agricultural] field, so [people know] what God looks like
when God helps [hungry] people.”*

- Tony Evans, “Finding Your Purpose”, LifeWay Devotionals



*“Now you’ve connected career,
if that’s what you feel God wants you to do, with purpose...*

Now, you get the power of God to fulfill it.”

- Tony Evans, “Finding Your Purpose”, LifeWay Devotionals

Thank You!



LET'S CONNECT:

Twitter:

@notill4me

@JSWilsonFarm

Instagram:

@JSWilsonFarm

Facebook:

"J. S. Wilson Farm"



Notill4me@gmail, WilsonFarmND@gmail.com